

**THE OHIO STATE UNIVERSITY**  
NISONGER CENTER

# WEBINAR

**NISONGER INSTITUTE 2022**  
*Addressing the Social Determinants of Health for People with Disabilities*

**Keynote Speaker: Eric Emerson, PhD**

**Panelists:**  
Amy Rohling McGee  
Susan M. Havercamp, PhD, FAAIDD  
Stephen Beetstra, DDS, MHSA  
Patricia T. Gabbe, MD, MPH, FAAP  
moderated by: Eric Emerson  
[www.go.osu.edu/ni2022](http://www.go.osu.edu/ni2022)

**May 13th**  
9:00AM-12:00PM  
via Zoom!

**JOIN US and REGISTER TODAY!**

- This webinar is being recorded; you must consent to view once the recording starts.
- Presentation materials are available from the event webpage: <https://go.osu.edu/ni2022>
- For Zoom support, contact: [Darlene.Byler@osumc.edu](mailto:Darlene.Byler@osumc.edu)

1

## 2022 NISONGER CHAMPION AWARD

**THE OHIO STATE UNIVERSITY**  
NISONGER CENTER

2

## “NISONGER CHAMPION”

*“The Nisonger Champion Award is designed to honor an individual or agency/organization who has made significant contributions to the quality of life for persons with developmental disabilities and their families. The recipient shall not only demonstrate a strong commitment to providing the skills and resources needed to succeed in evidence-based supports and services but has also displayed a sincere interest in the well-being of persons with developmental disabilities.”*

**THE OHIO STATE UNIVERSITY**  
NISONGER CENTER

3

## 2022 NISONGER CHAMPION AWARD



**Barbara Sapharas, MA, SLP**

Barb is a sibling. Barb worked in the field of developmental disabilities for over 40 years. She has a master's degree in speech-language pathology (SLP) from Cleveland State University. She has also worked as a direct support professional, Service Support Administrator, and a staff development specialist....

**THE OHIO STATE UNIVERSITY**  
NISONGER CENTER

4

## 2022 NISONGER CHAMPION AWARD

*"Barbara has been advocating for and helping people with developmental disabilities since she was 4 years old, when her brother Nick was diagnosed with cerebral palsy."*

*"Barb focuses on evidence-based approaches and strives to ensure that her trainings are grounded in practical applications that are delivered and used with reliability. She always has the best interests of the person with DD and their family in mind."*

*"Because she had two siblings with disabilities and because she is Barb, no one is more passionate about championing the cause of brothers and sisters of people with disabilities than Barb Sapharas. Barb is passionate and unyielding when it comes to supporting families of people with disabilities and particularly siblings."*



5



**KEYNOTE SPEAKER: Eric Emerson, PhD**

### PANELISTS:



**Amy Rohling McGee**, Health Policy Institute of Ohio



**Susan M. Havercamp, PhD, FAAIDD**, The Ohio State University Nisonger Center



**Stephen Beetstra, DDS, MHSA**, The Ohio State University Nisonger Center



**Patricia T. Gabbe, MD, MPH, FAAP**, The Ohio State University College of Medicine



6

## NISONGER INSTITUTE 2022



**Eric Emerson, PhD**

Emeritus Professor of Disability and Health Research  
Lancaster University (UK)



7



The Social Determinants of Health  
of People with Intellectual &  
Developmental Disabilities

8

8

## Social Determinants of Health & People with Intellectual & Developmental Disabilities

Lancaster University

Five questions ....

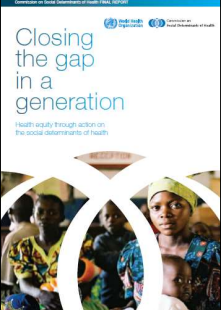
- What are 'social determinants'?
- How do they impact on health?
- What relevance do they have to understanding the health of people with intellectual & developmental disabilities?
- What do we need to know?
- What do we need to do?

9

## What are 'Social Determinants'?

Lancaster University

- WHO Commission 2008
- *'The societal conditions in which people are born, grow, live, work and age ..... early years' experiences, education, economic status, employment and decent work, housing and environment, and effective systems of preventing and treating ill health'*



Preamble to the Rio Political Declaration on Social Determinants of Health, adopted by UN Member States in October 2011

10

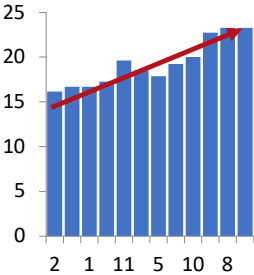
9

10

## A Little Bit of History ....

Lancaster University

- Louis René Villermé (1826)
- Annual mortality rates (per 1,000) related to *Arrondissement* wealth in Paris (1817-21)



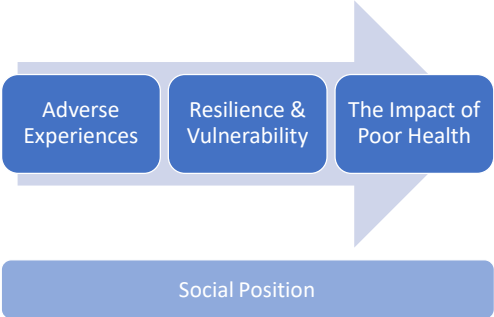
Arrondissement	Annual Mortality Rate (per 1,000)
2	~16
1	~16
11	~19
5	~18
10	~20
8	~23

11

11

## How do Social Determinants Lead to Health Inequity?

Lancaster University



```

    graph LR
      SP[Social Position] --> AE[Adverse Experiences]
      SP --> RV[Resilience & Vulnerability]
      AE --> IPH[The Impact of Poor Health]
      RV --> IPH
  
```

12

12

## Adverse Experiences



- Poverty and material hardship
- Area deprivation
- Violence
- Discrimination
- Social exclusion
- Lack of control
- Exclusion from education
- Not being employed
- Non-standard employment

13

13

## Resilience & Vulnerability



- **Individual capabilities** such as self-regulation, communication and problem-solving skills
- **Individual characteristics** such as faith, hope, believing that life has meaning, self-efficacy, sense of control, sense of belonging
- **Positive relationships** with caring adults, acquaintances, friends and romantic partners
- **Access to resources** such as effective caregiving and parenting, teachers and schools, health and welfare services, social capital, wealth and power.

14

14

## The Impact of Poor Health



- Reduced access to timely and effective treatment
- Increased impact of poor health on material and psychological well being

15

15

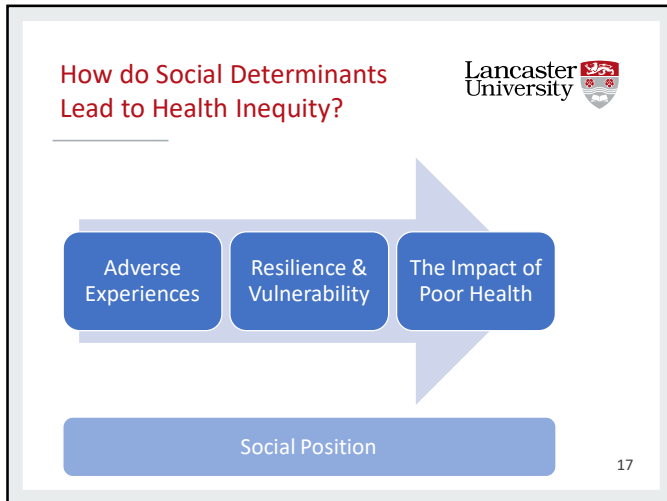
## Recent Developments



- **Cumulative exposure** across the life-course
  - *Timing*: Exposure in early life (including prenatally) may be more damaging
  - Indirect 'cascading' effects on subsequent risk exposure
- **Mediating pathways**
  - **Social** (e.g., parenting practices)
  - **Psychosocial** (e.g., self-efficacy)
  - **Biological** 'embedding'

16

16



17

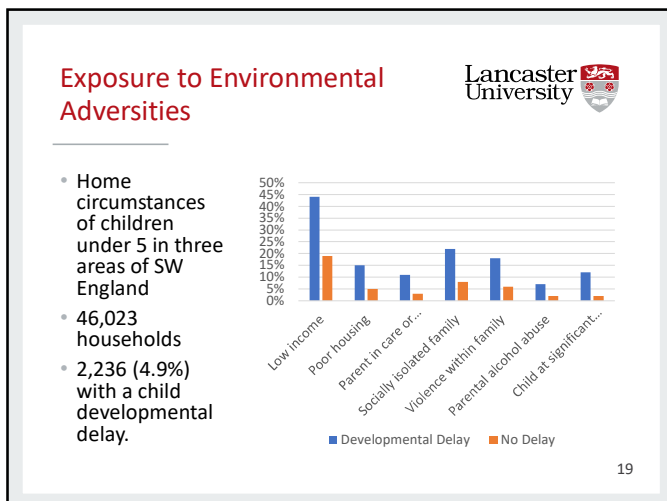
### Relevance to people with intellectual & developmental disabilities?

- Extensive evidence of increased risk of exposure to adversity

Lancaster University

18

18



19

### Relevance to people with intellectual disabilities?


- Extensive evidence of increased risk of exposure to adversity
- Evidence of reduced access to some potentially resilience promoting relationships and resources

Lancaster University

20

20


## Resilience & Vulnerability

Lancaster University 

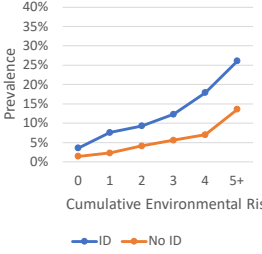
- **Individual capabilities** such as self-regulation, communication and problem-solving skills
- **Individual characteristics** such as faith, hope, believing that life has meaning, self-efficacy, sense of control, sense of belonging
- **Positive relationships** with caring adults, acquaintances, friends and romantic partners
- **Access to resources** such as effective caregiving and parenting, teachers and schools, health and welfare services, social capital, wealth and power.

21

## Resilience

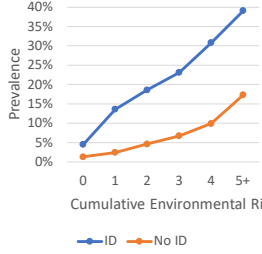
Lancaster University 

### Emotional Disorder



Cumulative Environmental Risk	ID (%)	No ID (%)
0	5	2
1	8	3
2	10	4
3	13	5
4	18	7
5+	28	12

### Conduct Disorder



Cumulative Environmental Risk	ID (%)	No ID (%)
0	5	2
1	12	3
2	18	5
3	22	7
4	30	10
5+	40	15

22

22


## Relevance to people with intellectual disabilities?

Lancaster University 

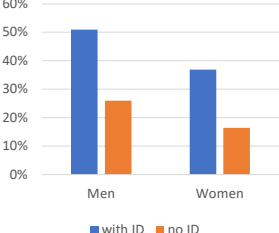
- Extensive evidence of increased risk of exposure to adversity
- Evidence of reduced access to potentially resilience promoting relationships and resources
- Evidence of reduced access to timely and effective treatment

23

## Timely and Effective Treatment

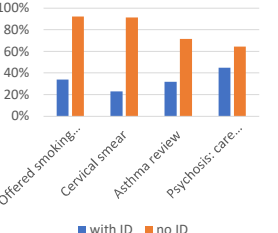
Lancaster University 

### Avoidable deaths in England 2010-2014



Gender	with ID (%)	no ID (%)
Men	50	25
Women	35	15

### Poor management of long-term conditions in primary care



Condition	with ID (%)	no ID (%)
Offered smoking...	35	90
Cervical smear	25	90
Asthma review	35	70
Psychosis: care...	45	65

24

24

## Future Research

Lancaster University 


Knowledge Gaps

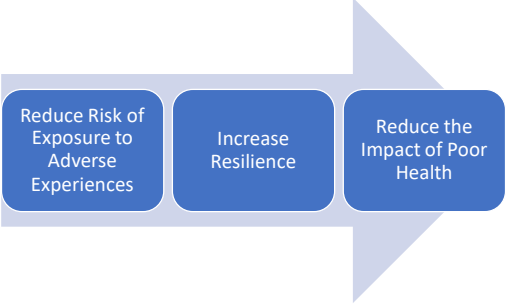
- The 'hidden majority'?
- Differences in resilience?
- Intersectionality?
- Low- and middle-income countries?

25

25

## Implications for Policy & Practice


Lancaster University 

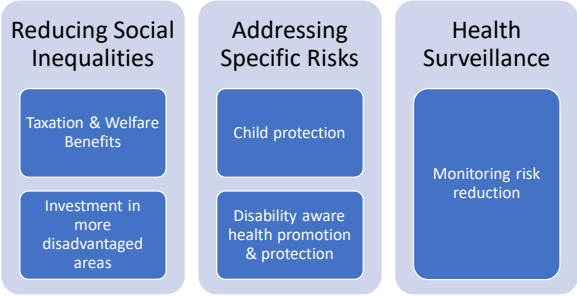


26

26

## Reducing Exposure

Lancaster University 




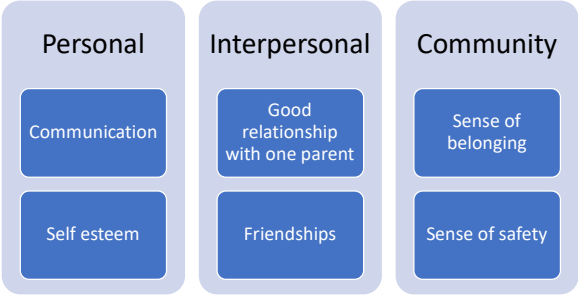
- Reducing Social Inequalities**
  - Taxation & Welfare Benefits
  - Investment in more disadvantaged areas
- Addressing Specific Risks**
  - Child protection
  - Disability aware health promotion & protection
- Health Surveillance**
  - Monitoring risk reduction

27

27

## Building Resilience

Lancaster University 




- Personal**
  - Communication
  - Self esteem
- Interpersonal**
  - Good relationship with one parent
  - Friendships
- Community**
  - Sense of belonging
  - Sense of safety

28

28


**Access to Timely and Effective Treatment**



Identification	Access	Health Surveillance
Accommodations to generic health screening programmes	Accommodations to generic health care	Health status
Annual health checks	Specialised liaison staff	Access to health care

29


29



**Thank you for listening**





30

30




**Moderator: Eric Emerson, PhD**

**PANELISTS:**


-  **Amy Rohling McGee**, Health Policy Institute of Ohio
-  **Susan M. Haverkamp, PhD, FAAIDD**, The Ohio State University Nisonger Center
-  **Stephen Beetstra, DDS, MHSA**, The Ohio State University Nisonger Center
-  **Patricia T. Gabbe, MD, MPH, FAAP**, The Ohio State University College of Medicine



31

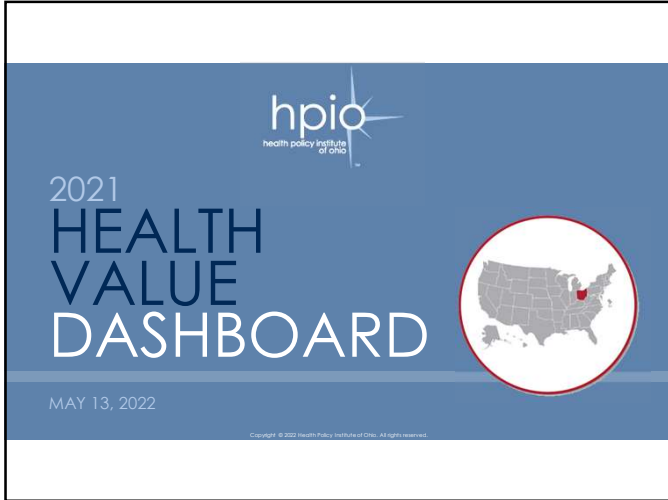


**Amy Rohling McGee**  
President  
Health Policy Institute of Ohio



32

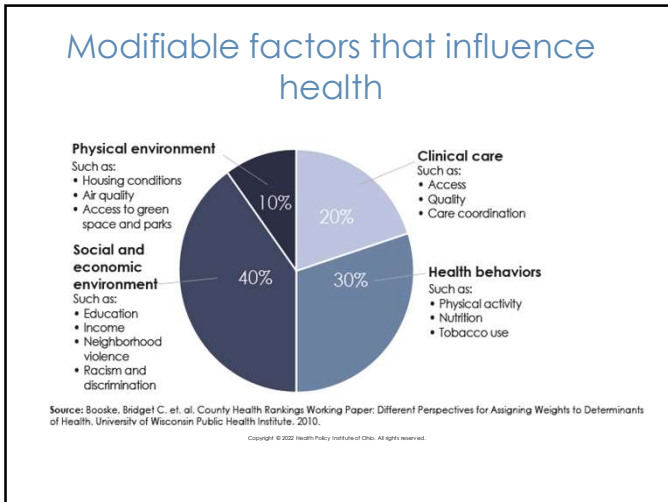




33



34

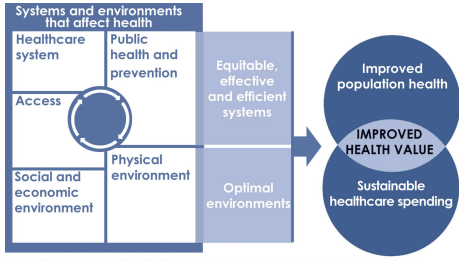


35



36

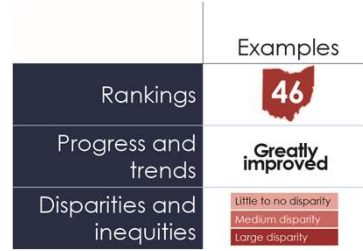
## Pathway to improved health value



World Health Organization definition of health: Health is a state of complete physical, mental and social well-being and not merely the absence of disease or infirmity.  
Copyright © 2022 Health Policy Institute of Ohio. All rights reserved.

37

## Data in context



Copyright © 2022 Health Policy Institute of Ohio. All rights reserved.

38

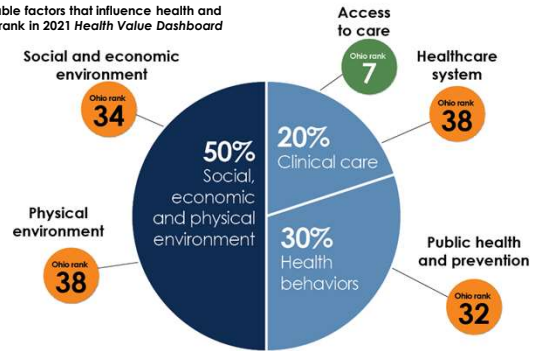
## Health value in Ohio



Copyright © 2022 Health Policy Institute of Ohio. All rights reserved.

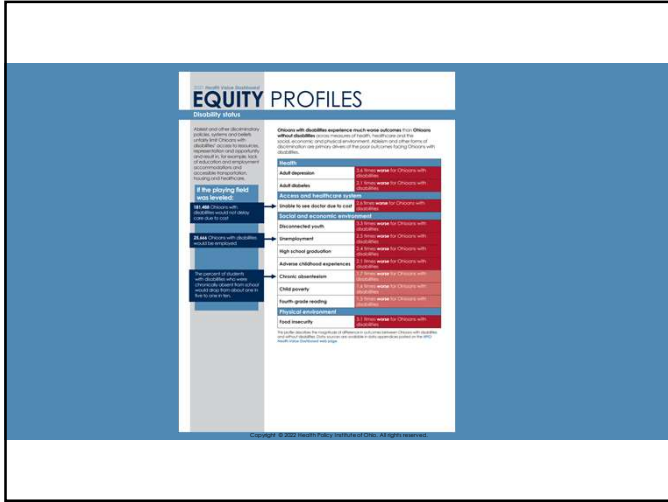
39

### Modifiable factors that influence health and Ohio's rank in 2021 Health Value Dashboard

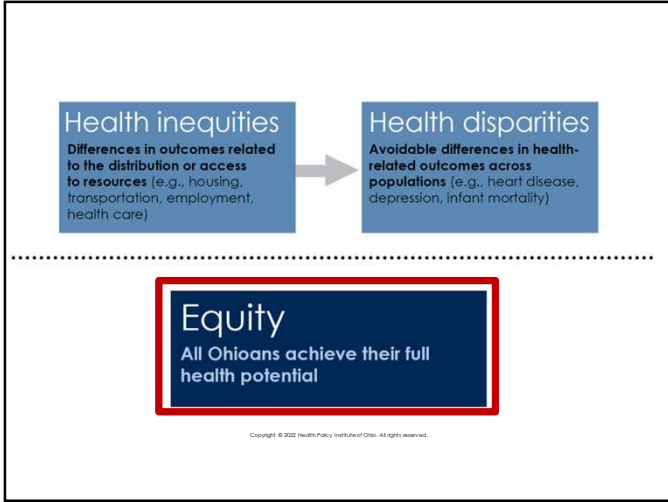


Copyright © 2022 Health Policy Institute of Ohio. All rights reserved.

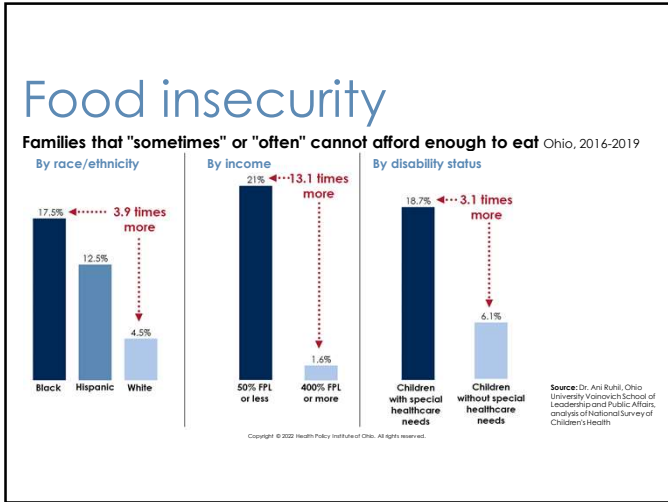
40



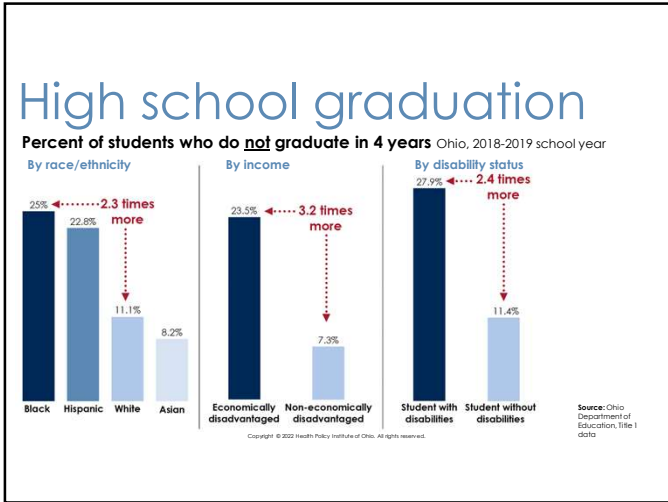
41



42



43



44

If these inequities were eliminated...

<p><b>96,510</b> fewer children in families with low incomes would experience <b>food insecurity</b></p>	<p><b>68,009</b> fewer Black Ohioans would be severely <b>cost burdened for housing</b></p>	<p><b>238,174</b> more Ohioans with less than a high school diploma would have <b>broadband internet access</b></p>	<p><b>181,488</b> Ohioans with disabilities would not have to <b>delay health care due to cost</b></p>
--	---	---	--

Source: National Equity Atlas

Copyright © 2022 Health Policy Institute of Ohio. All rights reserved.

45

Public Private

Copyright © 2022 Health Policy Institute of Ohio. All rights reserved.

46

Improvement is possible

47

hpio  
health policy institute of ohio

## Connect with us

<p><b>Social</b></p> <p> @HealthPolicyOH</p> <p> linkedin.com/healthpolicyohio</p>	<p><b>Email</b></p> <ul style="list-style-type: none"> <li>• HPIO mailing list (link on our homepage)</li> <li>• Ohio Health Policy News (healthpolicynews.org)</li> </ul>
--	--

[www.hpio.net](http://www.hpio.net)

Copyright © 2022 Health Policy Institute of Ohio. All rights reserved.

48

**CONTACT**

**Amy Rohling McGee**

Health Policy Institute of Ohio  
 arohlingmcgee@hpio.net

Copyright © 2022 Health Policy Institute of Ohio. All rights reserved.

49



**Susan M. Havercamp, PhD, FAAIDD**

Program Director, Health Promotion and Healthcare  
 Parity, Behavior Support Services Professor,  
 Department of Psychiatry and Behavioral Health




50







**IMPROVING THE HEALTH OF OHIOANS  
 WITH DISABILITIES**



51




ODHP is a partnership between The Ohio State University Nisonger Center, the Ohio Department of Health, the University of Cincinnati University Center for Excellence in Developmental Disabilities, and the Ohio Colleges of Medicine Government Resource Center.

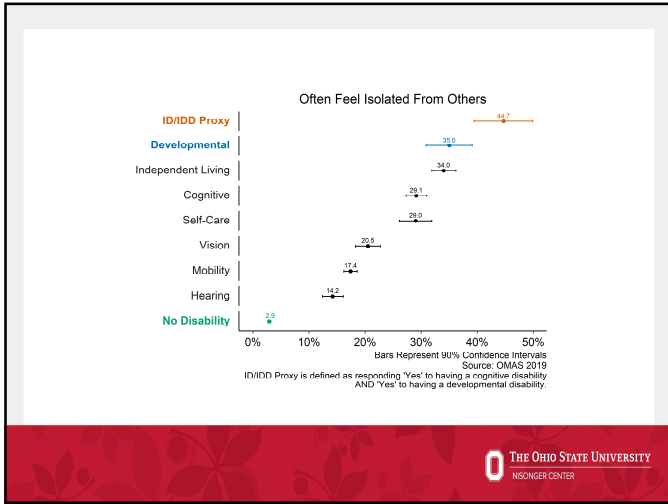





[nisonger.osu.edu/ODHP](http://nisonger.osu.edu/ODHP)
[OhioDisabilityandHealthProgram](https://www.facebook.com/OhioDisabilityandHealthProgram)
[@OhioDHP](https://twitter.com/OhioDHP)

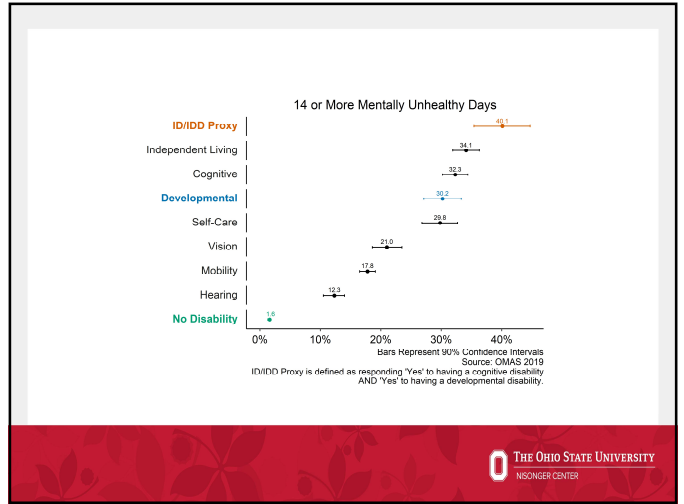
This presentation was supported, in part, by the Centers for Disease Control & Prevention through the CDC Cooperative Agreement Number 5U59DD000931-02. The contents of this presentation are solely the responsibility of the authors and do not necessarily represent the official views of the CDC.



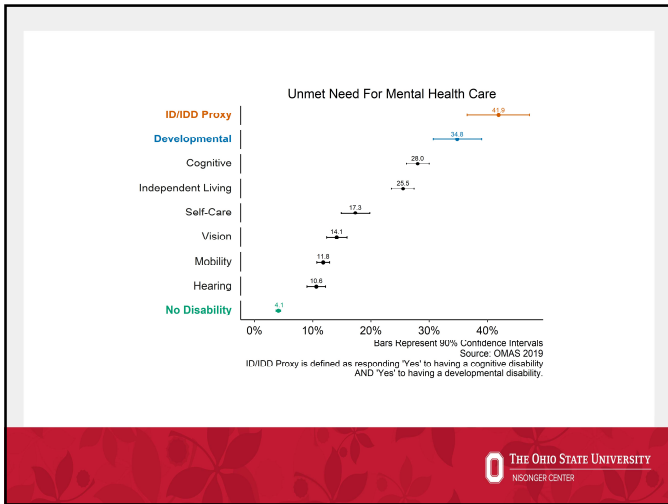
52



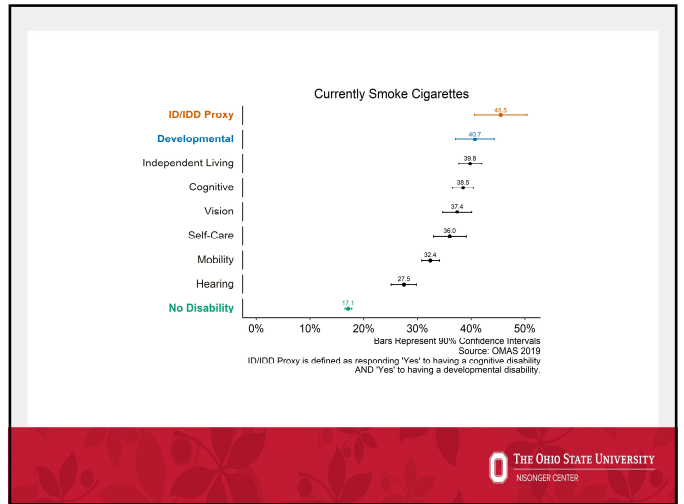
53



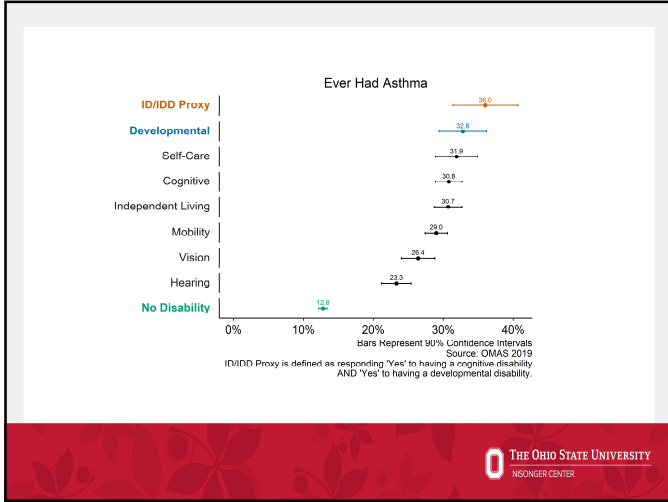
54



55



56



57




58




59



60



**Stephen Beetstra, DDS, MHSA**  
 Program Director, Nisonger Dental Services,  
 Assistant Professor of Clinical Dentistry  
 Division of Restorative and Prosthetic Dentistry



61

## HOW DENTISTRY IS LAGGING BEHIND IN RECOGNIZING THE IMPACT OF SOCIAL DETERMINANTS OF HEALTH



62

### SOCIAL DETERMINANTS OF HEALTH AND ITS IMPACT ON DENTAL CARE FOR INDIVIDUALS WITH IDD




- Follow up to the 2000 Surgeon General's Report on Oral Health
- Ties Oral Health into Total Health
- Addresses some of issues patients with SHCNs face in obtaining optimal oral health



63

### WHAT ARE THE ISSUES WE FACE IN OBTAINING ORAL HEALTH SERVICES FOR INDIVIDUALS WITH IDD?

- Social Determinate Problem One
  - Transportation
    - Lack of providers trained or willing to treat the population which creates a geographic maldistribution
    - Individuals depend on others for transportation
- Possible Solutions
  - Increase training of community providers to care for this population – Identify providers with the heart
  - Look at alternative models of care – Mobile dentistry, teledentistry



64



## WHAT ARE THE ISSUES WE FACE IN OBTAINING ORAL HEALTH SERVICES FOR INDIVIDUALS WITH IDD?

- Social Determinant Problem Two
  - Economic
    - Dental reimbursement model is archaic and does not take into consideration the difficulty or time of the procedure
    - Public insurance programs are underfunded
- Possible Solutions
  - Change the reimbursement model to allow for medical modifiers to justify cost for the service
  - Move dentistry out of the silo that it is currently located and make it part of health
  - Focus on health and not disease

65

## WHAT ARE THE ISSUES WE FACE IN OBTAINING ORAL HEALTH SERVICES FOR INDIVIDUALS WITH IDD?

- Social Determinants Problem 3
  - Education
    - Patient
    - Caregiver
    - Provider
- Possible Solutions
  - Revamp the education of providers to become more health based and not disease based
  - Improve training of caregivers to focus on disease prevention
  - Expand research into best practices that can be easily implemented by lay providers
  - Begin patient training early
  - Make post graduate residencies mandatory for dental providers

66

## WHAT ARE THE ISSUES WE FACE IN OBTAINING ORAL HEALTH SERVICES FOR INDIVIDUALS WITH IDD?

- Social Determinants Problem 3
  - Education
    - Patient
    - Caregiver
    - Provider
- Possible Solutions
  - Revamp the education of providers to become more health based and not disease based
  - Improve training of caregivers to focus on disease prevention
  - Expand research into best practices that can be easily implemented by lay providers
  - Begin patient training early
  - Make post graduate residencies mandatory for dental providers

67



**Patricia T. Gabbe, MD, MPH, FAAP**

George W. Paulson, MD, Scholar-in Residence  
The Ohio State University College of Medicine

68




**Parents with Intellectual Disabilities and the Social Determinants of Health: Insights from Moms2B**

**THE OHIO STATE UNIVERSITY**  
WEXNER MEDICAL CENTER

69

**Parents with Intellectual Disabilities**

- Stories
- Moms2B
- Social Determinants of Health
- Summary



**THE OHIO STATE UNIVERSITY**  
WEXNER MEDICAL CENTER

70

**Moms2B: A Weekly Group Model Set in 8 Columbus Neighborhoods**



71

**6 Churches and 2 hospitals host Moms2B weekly sessions. Over 3500 pregnant persons have attended from 2010-ongoing**



New Salem Baptist Church  
North Linden

Hillcrest Baptist  
Curious to Committed

Church FOR ALL PEOPLE  
COLUMBUS, OHIO

Southside

Epworth Church  
5100 Karl Road Columbus, OH 43229 614.865.8015  
A United Methodist Episcopal Church  
Worship with us every Sunday at 10:30 a.m.

West-Hilltop

Northeast

Grace Missionary Baptist  
Weinland Park

New Birth Christian  
Southeast

72

### Can Preterm Deliveries be Prevented?

Main DM, Gabbe SG, Richardson D and Strong S. 1985 AJOG

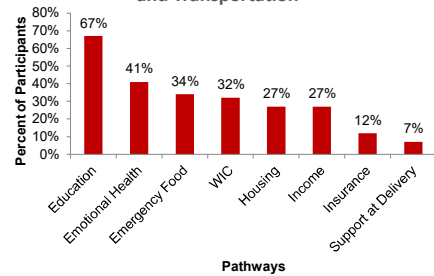
“...a lifetime of poor nutrition, poor housing, poor education, tremendous stress and unplanned pregnancies are the underlying causes....”



73

### Social Determinants of Health Experienced by Moms2B Participants

Moms2B Pathways Administered  
July 2014-Jan 2015 (n=113)  
and Transportation



Moms2B The Ohio State University Wexner Medical Center © 2014



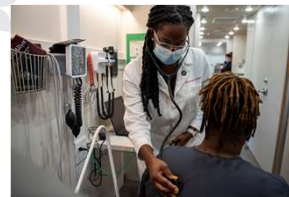
74

### Developing trust and learning at Moms2B



75

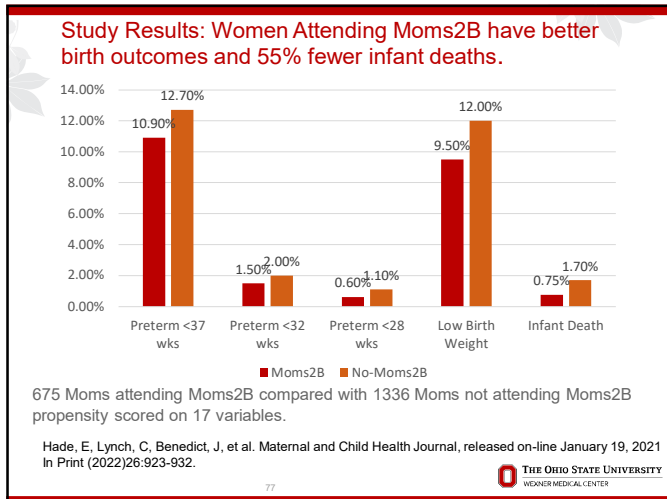
### Bringing Care into the Community



Dr. Kamilah Dixon  
Moms2B Medical Director  
OSU Department of OB-Gyn.



76



77

- Summary**
- Moms2B group teaching and support improves pregnancy outcomes and reduces infant deaths.
  - Most women attending Moms2B have typical development.
  - However, 1-3% of pregnant people that attend have intellectual disabilities and need specialists:
    - To support their reproductive health plans.
    - If pregnant, to help with parenting skills and social support to maintain custody of their infants and children.
  - More studies are needed to help people with intellectual disabilities establish parenting skills and support their reproductive health plans.
- THE OHIO STATE UNIVERSITY  
WEAVER MEDICAL CENTER

78



79

**Q&A**

**QUESTIONS?**

THE OHIO STATE UNIVERSITY  
NISONER CENTER

80